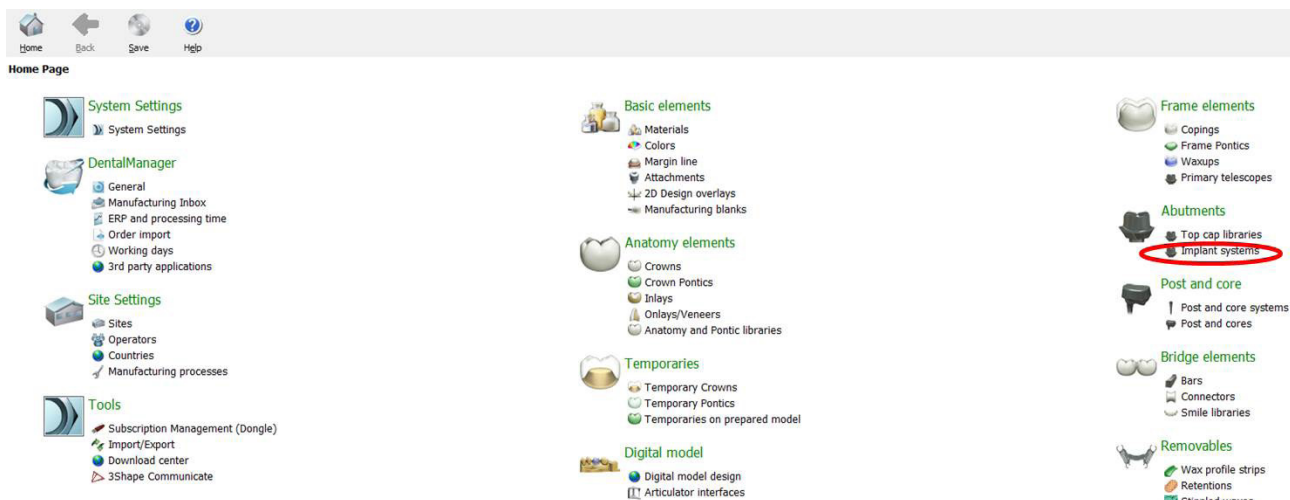


Step-by-step instructions

Importing CAD libraries into 3Shape's Dental System

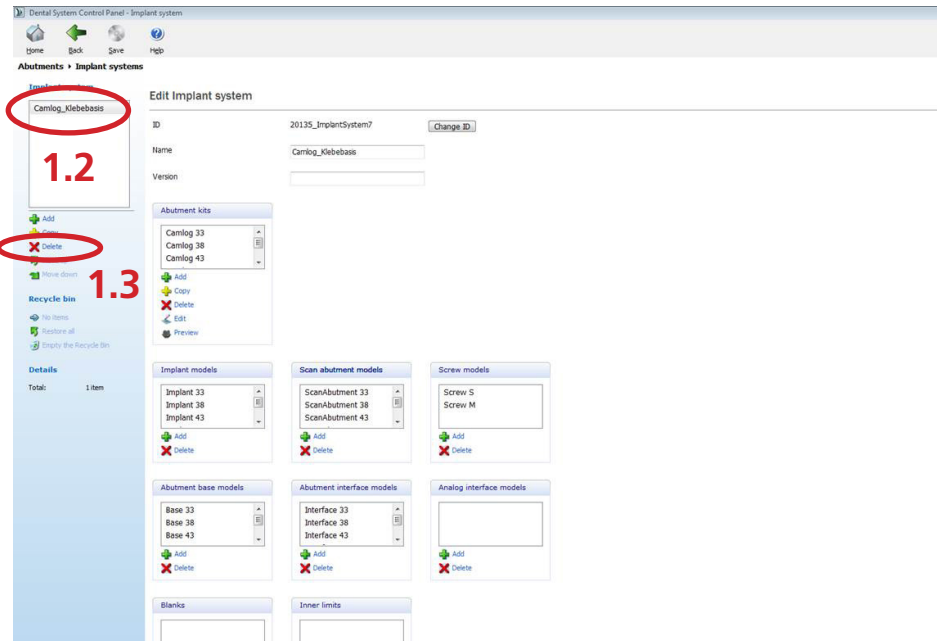
The previous versions of CAMLOG implant kit libraries (incl. from third party providers) should be deleted before importing the new library in order to minimize data errors.

1.1 Open *Implant systems* on the Control Panel

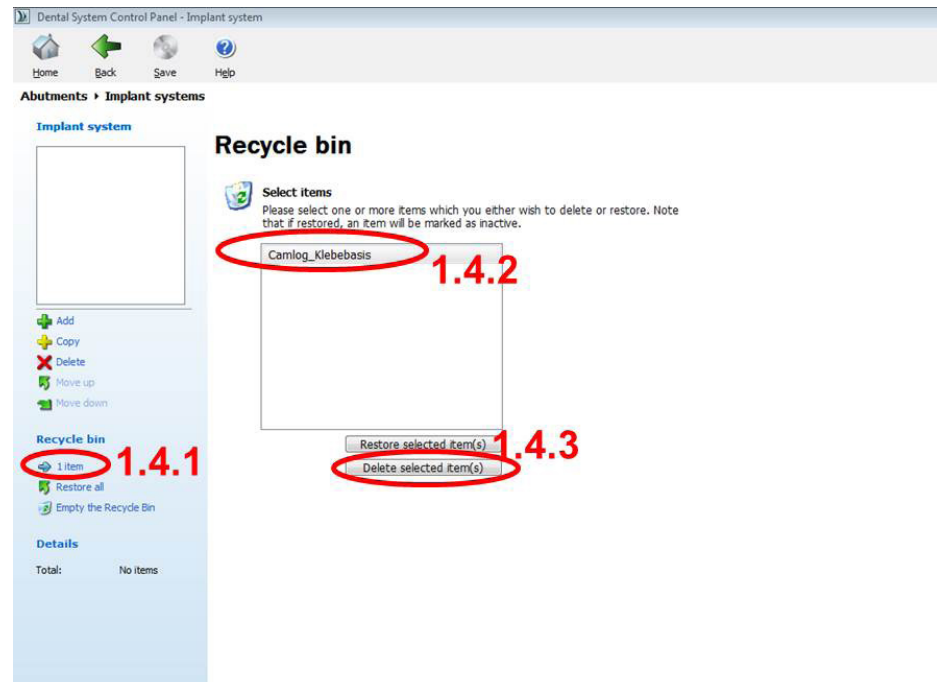


1.2 Select the currently used CAD library (for example CAMLOG® Klebebasis)

1.3 Choose **Delete**

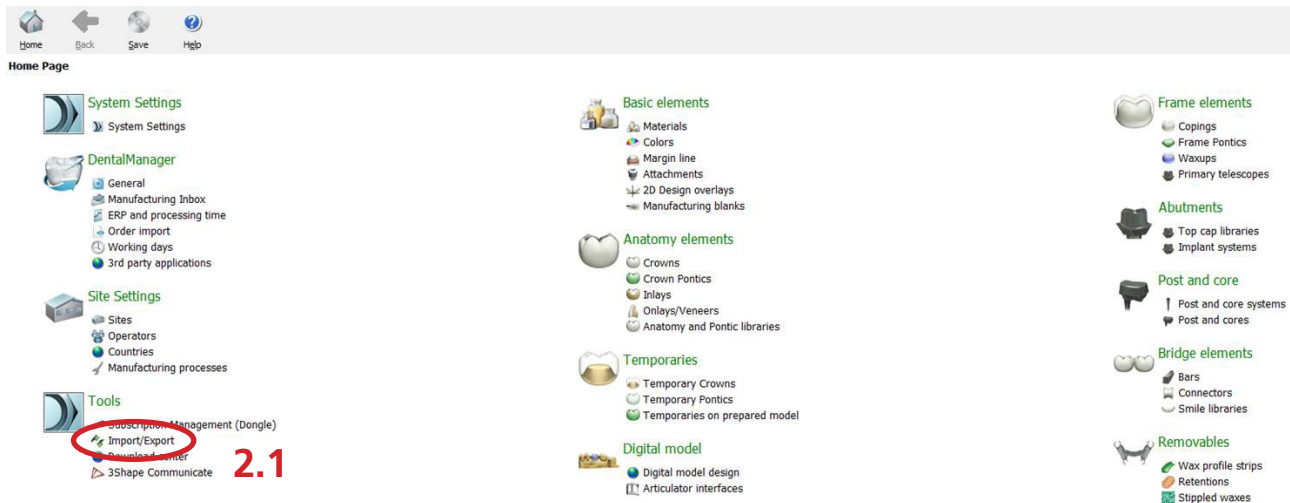


1.4 Remove library in **Recycle bin** in three steps

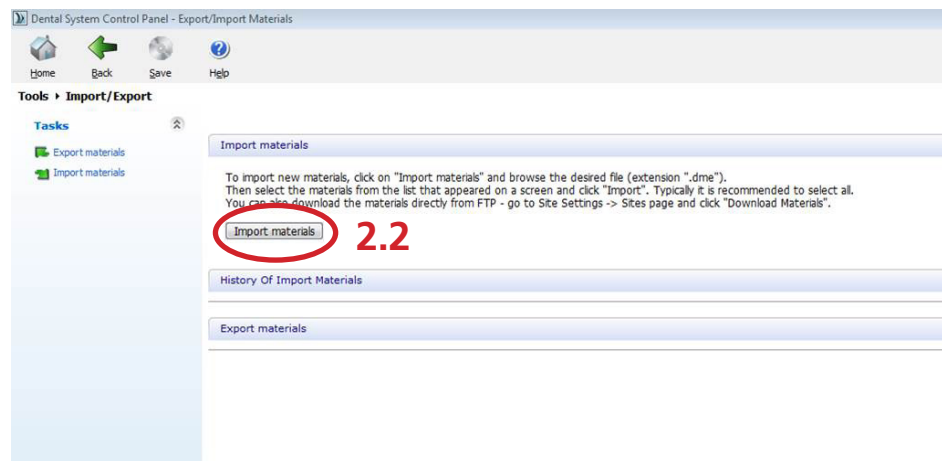


After removing previous versions of this library or libraries, the import of the current version (of the library) via the Control Panel can be started.

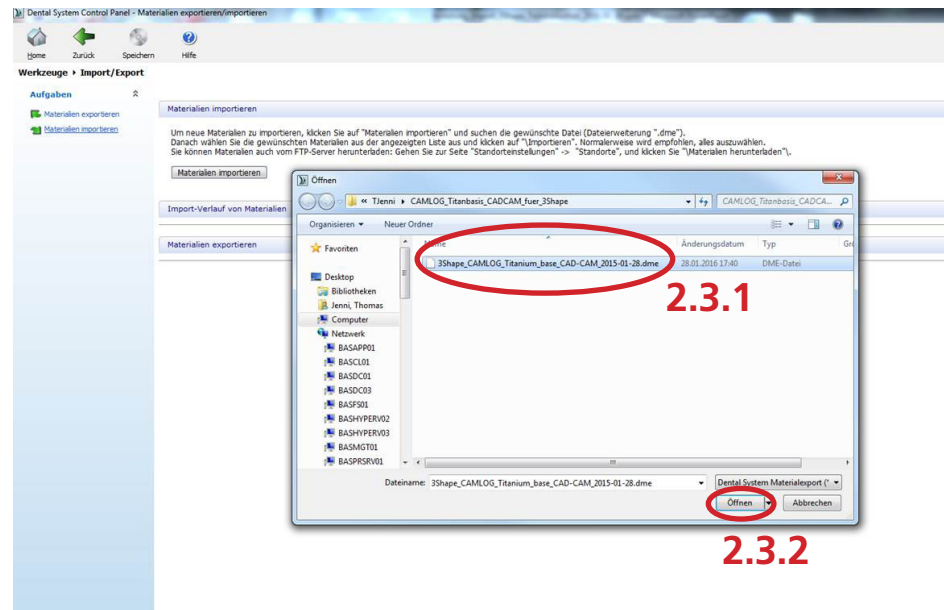
2.1 Choose *Import/Export*



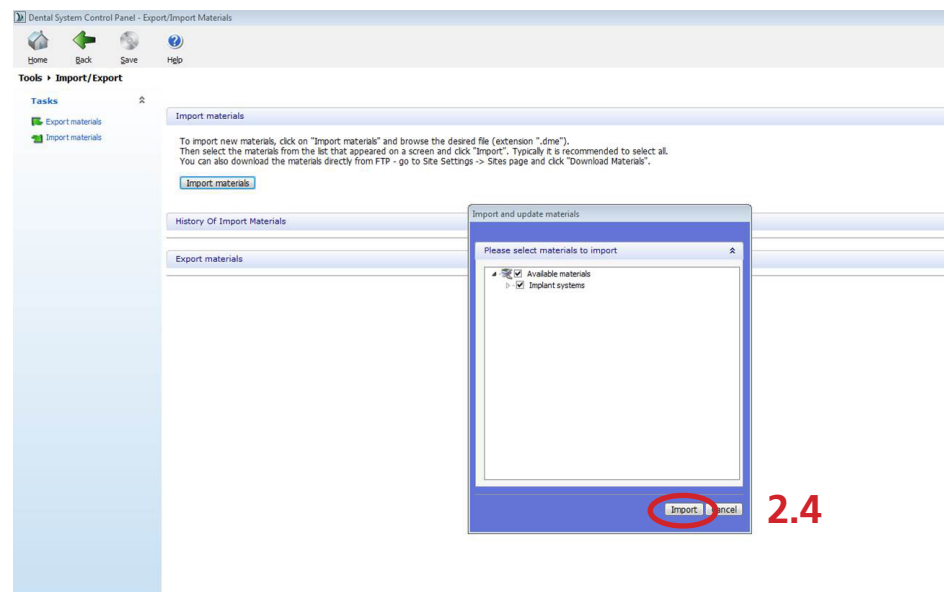
2.2 Choose *Import materials*



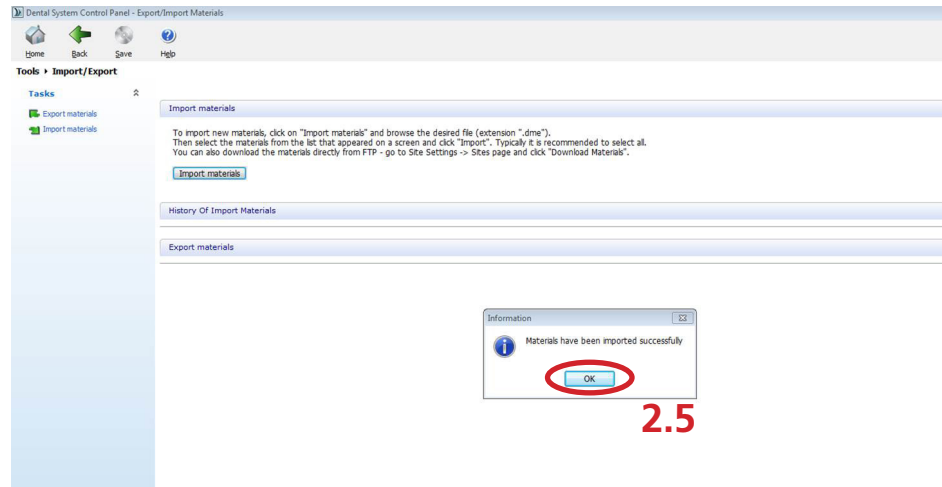
2.3 Choose and open the current library (for example 3Shape_CAMLOG_Titanium_Base_CAD-CAM)



2.4 Import the library



2.5 Confirm successful import



2.5

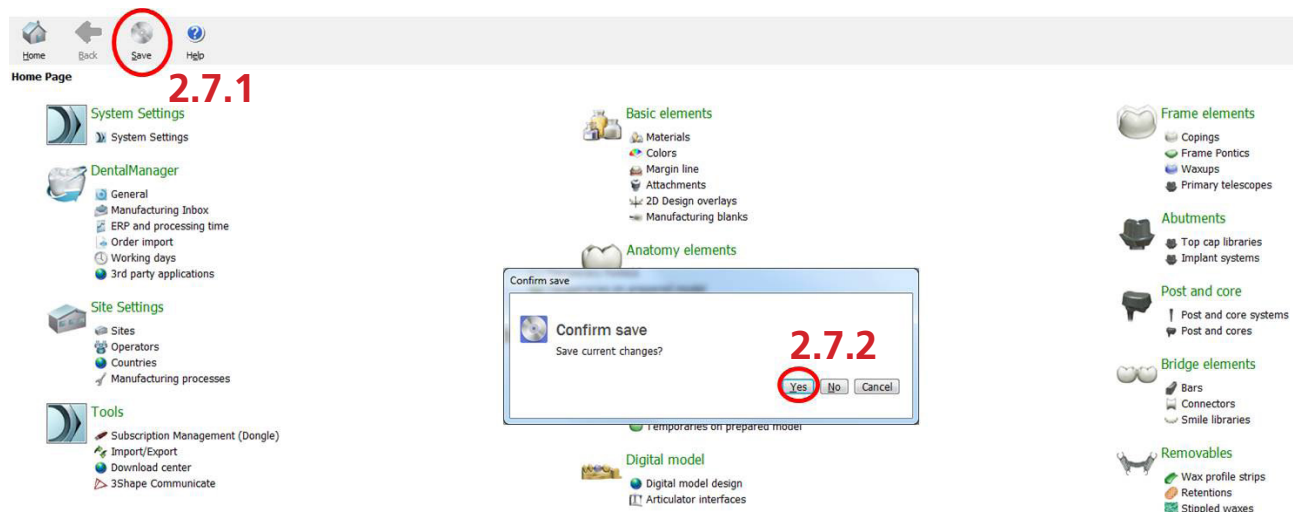
2.6 Go back to Control Panel overview



2.6

Save the imported library

2.7 Save and confirm



2.7.2